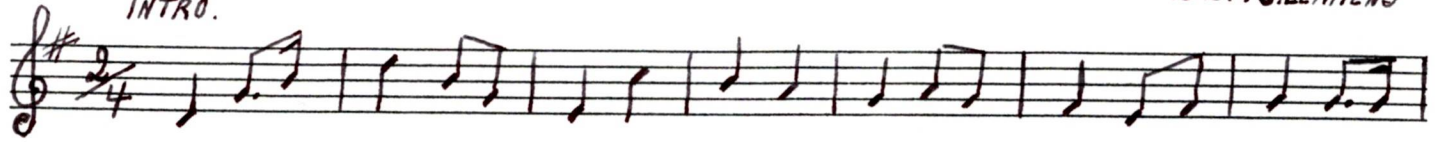


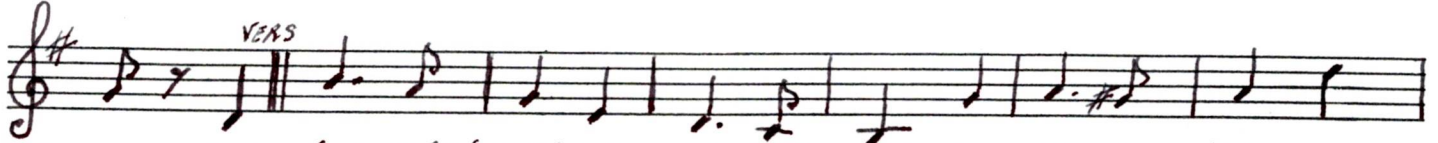
CLUBLIED WIT-BLAUW.

TEKST: J. LEMMENS

INTRO.



VERS

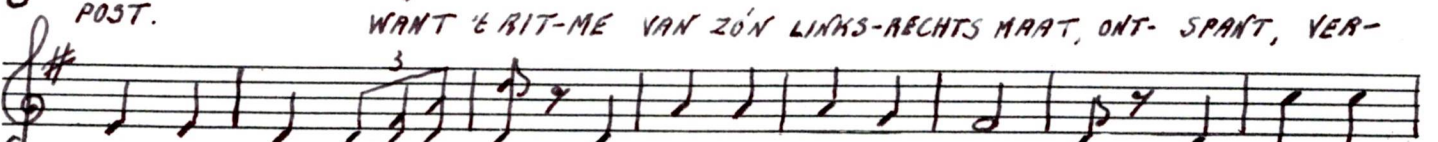


ALS WIT-BLAUW AAN 'E MAR-CHE-REN GAAT, IS JONG EN OUD OP



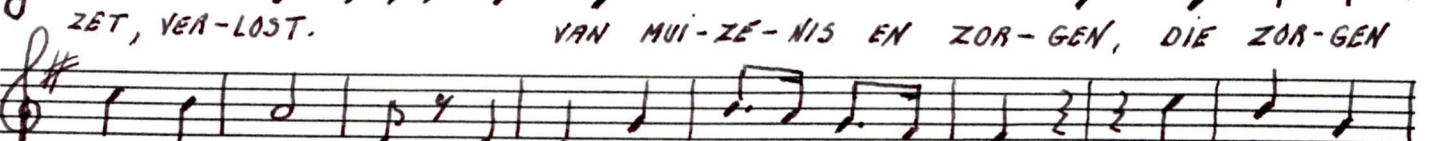
POST.

WANT 'E RIT-ME VAN Z'N LINKS-RECHTS MAAT, ONT-SPANT, VER-

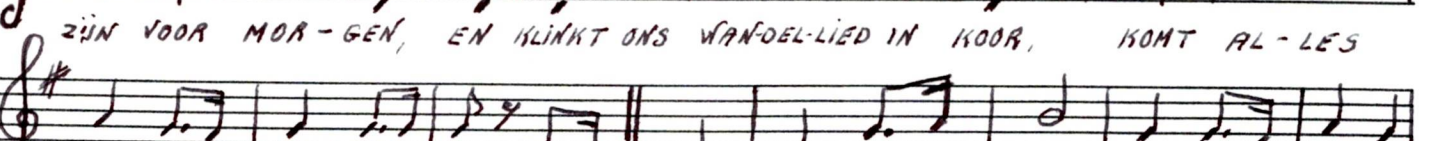


ZET, VER-LOST.

VAN MUI-ZE-NIS EN ZOR-GEN, DIE ZOR-GEN

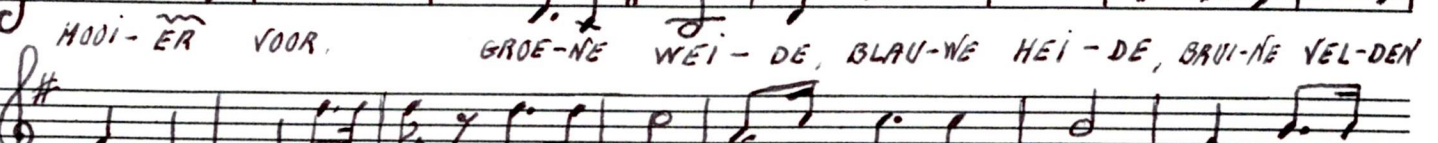


ZIJN VOOR MOR-GEN, EN KLINT ONS WANDEL-LIED IN KOOR, KOMT AL-LES



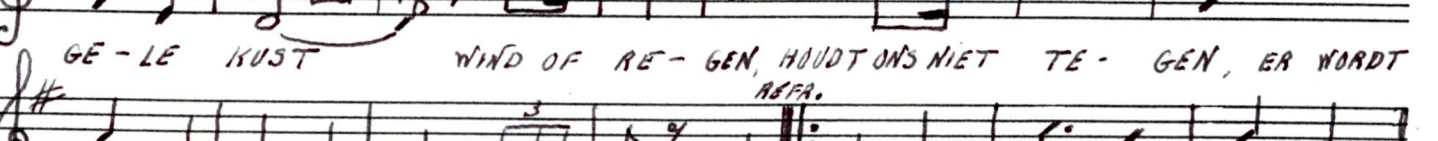
HOEI-ER VOOR,

GROE-NE WEI-DE, BLAU-WE HEI-DE, BRAU-NE VEL-DEN



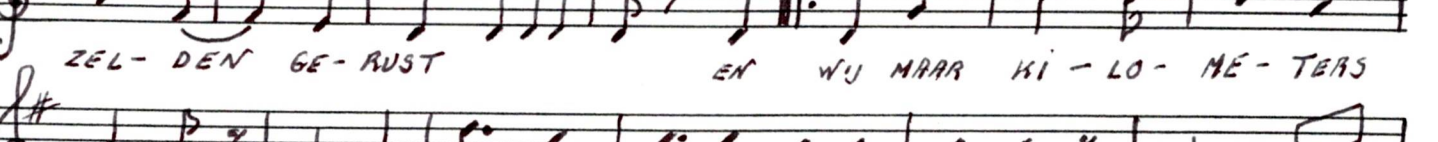
GE-LE KUST

WIND OF RE-GEN, HOUDT ONS NIET TE-GEN, ER WORDT

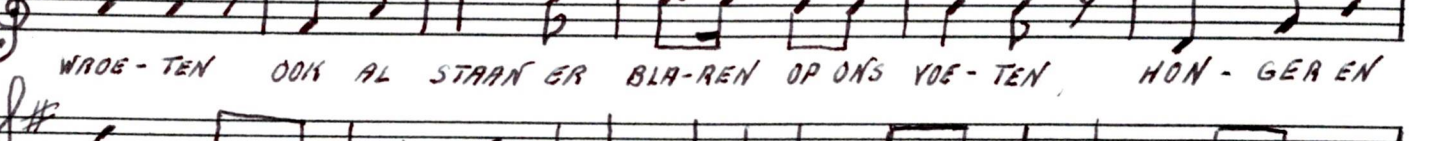


ZEL-DEN GE-RUST

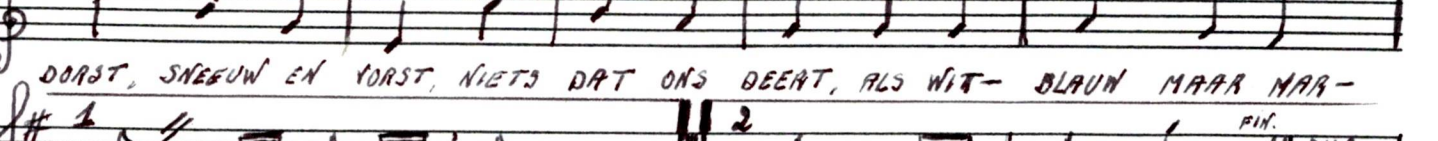
EN WIJ MAAR KI-LO-ME-TERS



WROE-TEN OOK AL STAAN ER BLA-REN OP ONS YOE-TEN, HON-GER EN

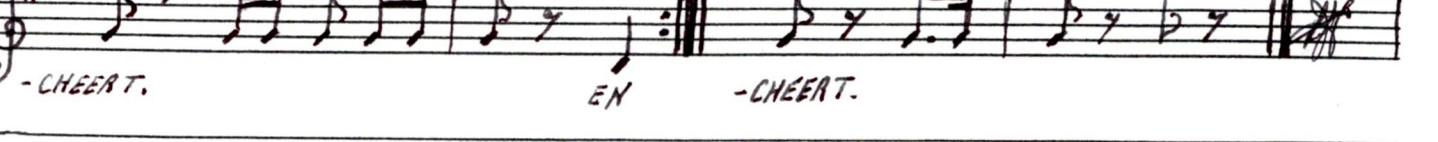


DORST, SNEEUW EN YORST, NIETS DAT ONS DEERT, ALS WIT-BLAUW MAAR MAR-



-CHEERT.

EN -CHEERT.



CLUBLIED WIT-BLAUW.

Handwritten musical score for "Clublied Wit-Blauw." The score is written on ten staves in G major (one sharp) and 2/4 time. It begins with an "INTRO" section. The notation includes various rhythmic patterns, including eighth and sixteenth notes, and rests. There are several dynamic markings such as accents (^) and slurs. A "TRAS" marking is present at the end of the first staff. A "REPR. 2x" marking is located above the eighth staff. The piece concludes with a "FIN" marking at the end of the tenth staff. The handwriting is in black ink on a white background.